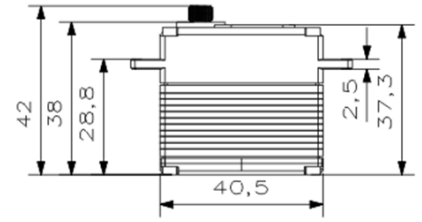
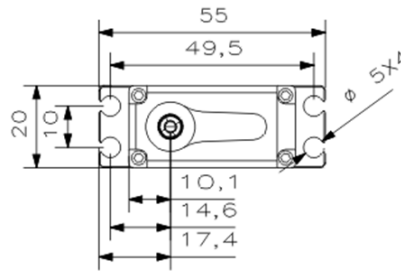
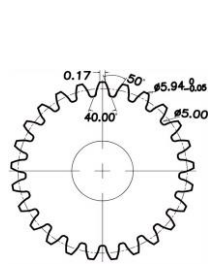


### MS725 V8.0 Technical Specification

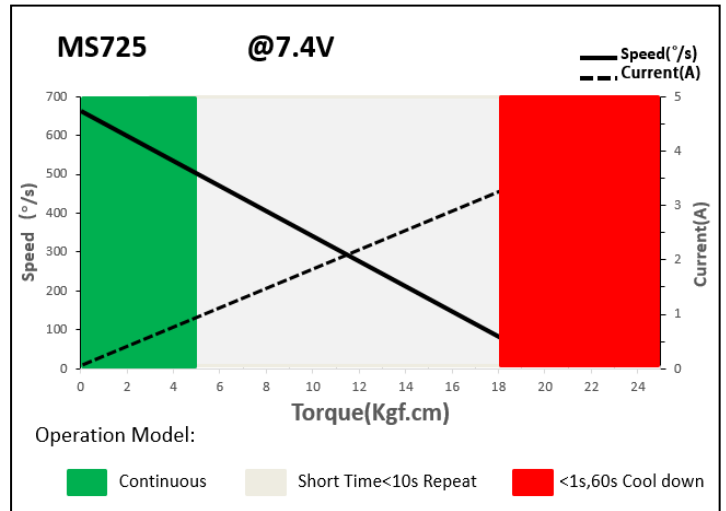


25T 6mm Output Shaft Spline

### 1. Operating Data

Rated Voltage	DC7.4V
Voltage Range	DC6.0V-8.4V
Stalling Torque	15Kgf.cm@6.0V
	18Kgf.cm@7.4V
	20Kgf.cm@8.4V
No-load Speed	0.09sec/60°@6.0V
	0.08sec/60°@7.4V
	0.07sec/60°@8.4V
Working Frequency	1520us/333Hz
Default Travel Angle	±100°=200° Total
Temperature Range	-10°C .....+65°C
Soft Start	Programmable
Programmable	Yes
Case Material	Aluminum Alloy
Motor Type	Coreless DC Motor
Gear Set Material	Hardened Steel
Position Sensor	Contactless
Ball Bearing	2BB
Case Dimensions	40.5*20*38mm±0.2mm
Weight	70g±10%

### 2. Performance

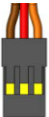


### 3. Command signal

#### PWM Command Interface

Signal Voltage	HIGH: min.3.3V, max.5.0V Low: min.0.0V, max.1.5V
Pulse Lengths	500us-2500us
Pulse Lengths for Position	500us/1500us/2500us -100°/ 0°/+100°

### 4. Electrical Connection

 3 2 1	Pin Assignment			
	1	Orange	Signal	PWM Command
	2	Red	DC+	Supply Voltage
	3	Brown	DC-	Supply Ground