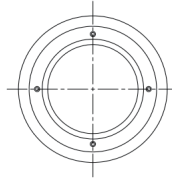
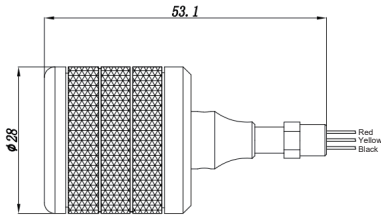
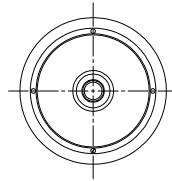
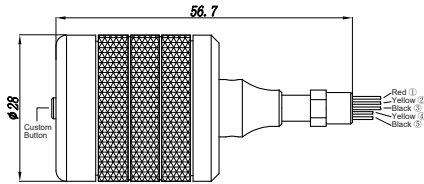


Overview and Specification



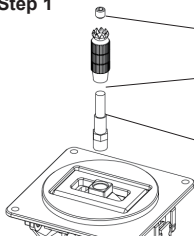
- Size: $\Phi 28 \times 53.1$
- Red wire from Pot: VCC
- Yellow wire from Pot: Signal
- Black wire from Pot: GND



- Size: $\Phi 28 \times 56.7$
- Wire ① from Pot: VCC
- Wire ② from Pot: Signal
- Wire ③ from Pot: GND
- Wire ④ from Button: Signal
- Wire ⑤ from Button: GND

Installation

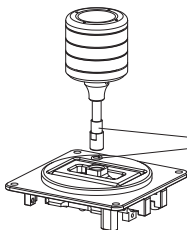
Step 1



①: Unscrew the screw and take the top stick out.

②: Take this out and assemble the extended stick.

Step 2



①: Put the spring washer into the base of the lever.

②: Screw the lever in the base as tightly as possible.

If the gimbal is loose after installation, the springs of the gimbal could be replaced by the spare ones.

FrSky is continuously adding features and improvements to our products. To get the most from your product, please check the download section of the FrSky website www.frsky-rc.com for the latest update firmware and manuals